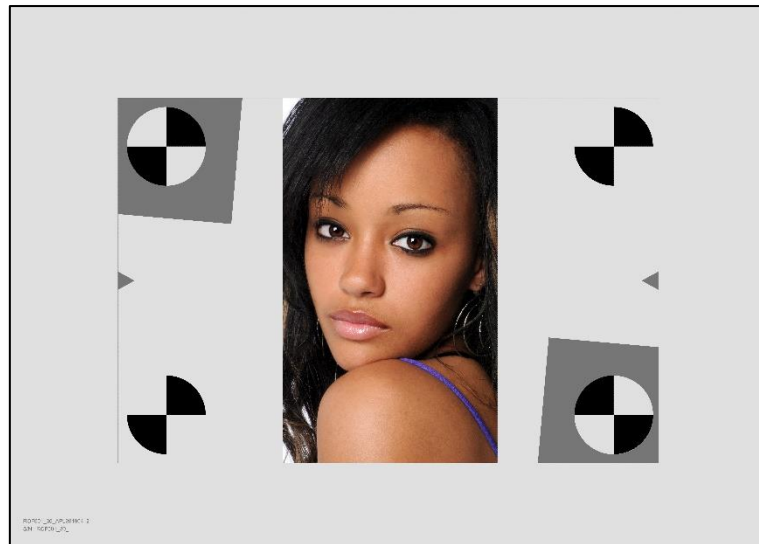


Focus Range chart

ROF001_30



General specifications

DXOMARK Image Labs Reference	ROF001_30
Support dimensions	420 x 297 x 3 mm (16.5 x 11.7 x 0.12")
Support material	White dibond
Mount holes	NA
Weight	0.5 Kg
HS Code	9031.80.8080
Country of origin	France

Pattern specifications

Pattern size	300 x 200 mm (11.81 x 7.87")
Pattern elements	1 portrait picture (200x120 mm) 2 vertical SFR transitions 2 horizontal SFR transitions 4 markers (Ø 44 mm)
Print process	Ink jet pigments
Paper	Fine Art 305g matt laid
Resolution	1.6 lp/mm @ 80% MTF

Description

"Focus Range" chart for digital camera testing