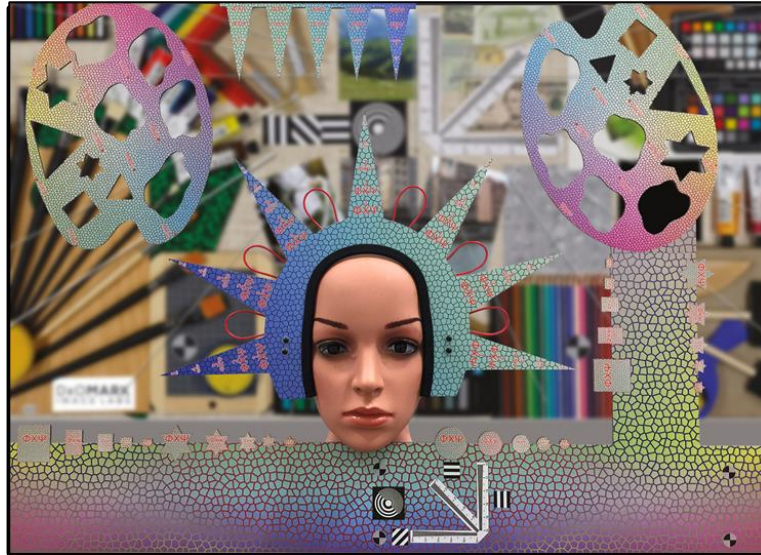


## Bokeh Set-up BOKEH\_001



### General Specifications

DXOMARK Image Labs Reference	<p>BOKEH_001 Including these elements:</p> <ul style="list-style-type: none"> <li>- Bokeh Background, Bokeh Head, Bokeh Easel, Bokeh Chart, Bokeh lights.</li> </ul> <p>PAPER_BACK_SYS required (not included)</p>
Dimensions	<p>Bokeh Background: 2700 x 4000 mm (106,3 x 157,5")                  Bokeh Head: 490 x 385 x 200 mm (19,3 x 15,2 x 7,9")                  Bokeh Easel: 1600 x 1050 x 520 mm (63 x 41,3 x 20,5")                  Bokeh Chart: 1050 x 630 mm (41,3 x 24,8")                  Bokeh lights: 310 x 80 x 80 mm (12,2 x 3,1 x 3,1")</p>
Material	<p>Bokeh Background: Aluminum, Printed fabric                  Bokeh Head: Dibond, Plastic, rubber, Aluminum                  Bokeh Easel: Aluminum, laminated Resin impregnated kraft                  Bokeh Chart: Dibond                  Bokeh lights: Plastic case, 2 LED lights controlled by a remote</p>
Color	Black and multicolor
Weight	45 Kg ( 99,21 lbs.)
HS Code	9031.80.8080
Country of origin	France

**Description**

This equipment is a part of Analyzer perceptual analysis module. It is used to evaluate the efficiency of a camera to reproduce bokeh in a photo.